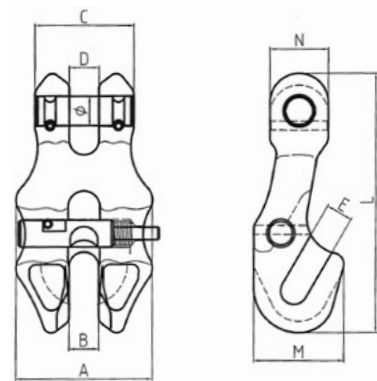


# LEGEND Grade 100 Clevis Shortening Clutch With Safety Pin

Legend Grade 100 Clevis Shortening Clutch with Safety Pin is designed to adjust the length of a chain sling easily and securely. The safety pin ensures the chain remains firmly in place, preventing accidental detachment during use. This clutch provides a simple, direct connection to the chain without reducing the working load limit.

All Legend Grade 100 hooks and components feature clear distinguishing marks for easy identification.

- Surface Finish: Painted Blue
- 25% higher working load limit than G80
- Safety Factor: 4:1
- Complies to AS 3776
- Test Certificates available upon request



Item Code:	Size	WLL	Dimensions								Weight	Pack Qty
			A	B	C	D	E	M	N	L		
	mm	T	mm	mm	mm	mm	mm	mm	mm	mm	kg	pc
L100-CCSP-06	6	1.4	38	7.5	27	7.5	7.5	29	16	73	0.25	40
L100-CCSP-08	8	2.5	50	9.5	33	9.5	9.2	36	23	92	0.43	25
L100-CCSP-10	10	4	60	11.7	43.5	11.7	12	45.4	26	115	0.8	14
L100-CCSP-13	13	6.7	79	15	55	15	15.5	54	34	149	1.67	6
L100-CCSP-16	16	10	98	19	70	19	18.5	70	40	184	4.2	3

Specifications and dimensions are subject to change without notice.