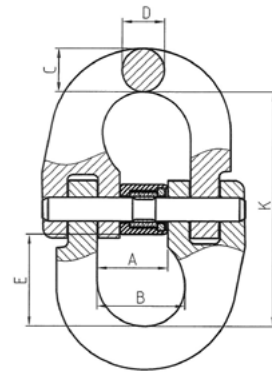


LEGEND Grade 100 Connecting Link

Legend Grade 100 Connecting Links are widely employed in chain slings to establish secure connections between master links, chain links, hooks, and other lifting components.

All Legend Grade 100 hooks and components feature clear distinguishing marks for easy identification.

- Surface Finish: Painted Blue
- 25% higher working load limit than G80
- Safety Factor: 4:1
- Complies to AS 3776
- Test Certificates available upon request.



| Item Code: | Size | WLL | Dimensions | | | | | | Weight | Pack Qty |
|-------------|------|------|------------|------|------|------|-------|------|--------|----------|
| | | | A | B | C | D | K | H | | |
| | mm | T | mm | mm | mm | mm | mm | mm | kg | pc |
| L100-CNL-06 | 6 | 1.4 | 14 | 16.9 | 8.5 | 7 | 44.5 | 11 | 0.08 | 150 |
| L100-CNL-08 | 8 | 2.5 | 18.5 | 22.7 | 10.5 | 10 | 63 | 14 | 0.18 | 100 |
| L100-CNL-10 | 10 | 4 | 23 | 27.7 | 12.6 | 12.6 | 71 | 18 | 0.34 | 50 |
| L100-CNL-13 | 13 | 6.7 | 28 | 33.2 | 16.5 | 16.5 | 92.5 | 23 | 0.68 | 25 |
| L100-CNL-16 | 16 | 10 | 33.5 | 39 | 20 | 20 | 106.5 | 29.5 | 1.22 | 20 |
| L100-CNL-20 | 20 | 16 | 42 | 47.3 | 25 | 25 | 123 | 35.5 | 2.13 | 10 |
| L100-CNL-22 | 22 | 19 | 48 | 55 | 27 | 27 | 137.5 | 39 | 3 | 6 |
| L100-CNL-26 | 26 | 26.5 | 61 | 68 | 32 | 32 | 163 | 45 | 5.22 | 4 |
| L100-CNL-32 | 32 | 40 | 80 | 87 | 40 | 40 | 197 | 54 | 9.55 | 2 |

Specifications and dimensions are subject to change without notice.