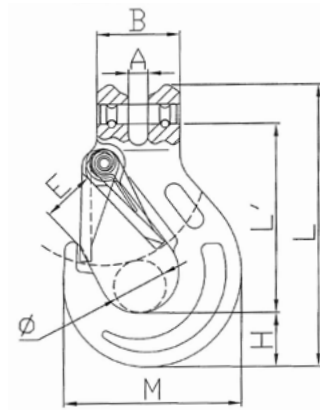


# LEGEND Grade 100 Clevis Sling Safety Hook

Legend Grade 100 Clevis Sling Safety Hooks are versatile and reliable hooks that can be used in a wide range of slinging applications. These hooks are designed with a cast latch, providing an additional layer of safety and security. The clevis connection is designed for easy connection directly to the chain, eliminating the need for a connecting link.

All Legend Grade 100 hooks and components feature clear distinguishing marks for easy identification.

- Surface Finish: Painted Blue
- 25% higher working load limit than G80
- Safety Factor: 4:1
- Complies to AS 3776
- Test Certificates available upon request.



Item Code:	Size	WLL	Dimensions										Weight	Pack Qty
			A	B	C	D	E	H	M	L'	L	Ø		
	mm	T	mm	mm	mm	mm	mm	mm	mm	mm	mm	mm	kg	pc
L100-CSH-06	6	1.4	7.5	32	18	16.5	18.5	21	68.5	73	109	18	0.33	40
L100-CSH-08	8	2.5	9.5	37	23	17	25	27.5	88	88.5	134	24	0.7	25
L100-CSH-10	10	4	12	48	29.5	24	28	33.5	105.5	105	161.5	30	1.3	15
L100-CSH-13	13	6.7	15	59	37	34	38	42	134	132	203	40	2.3	9
L100-CSH-16	16	10	18.5	70	46	38	44	50	160.5	161	248	50	3.6	6
L100-CSH-20	20	16	25	85	52	48	52	56	190.5	197	297	53	7	2
L100-CSH-22	22	19	27	100	61	50	66	62	214.5	214	326	68	12.1	2
L100-CSH-26	26	26.5	30	118	70	60	72	73	248	247	383	76	16.1	1
L100-CSH-32	32	40	37.5	149	80	71	87	87	281	310	474	81	27.2	1

Specifications and dimensions are subject to change without notice.